

# Sizewell C Notice to Mariners No 7 of 2024 (updated)

## *Geotechnical Investigations and Seabed Sampling*

NOTICE IS HEREBY GIVEN: That drilling operations will be carried out within SZC Harbour Authority at 11 separate locations offshore and eight separate locations nearshore, starting from 29th August 2024 for approximately 16 weeks.

### **Nearshore Intrusive Ground Investigations and Seabed Sampling**

The works comprise Geotechnical Investigations (GI) of the Sizewell **nearshore** area to facilitate construction of the SZC beach landing facility, piled jetty, combined discharge outfall and de-salination plant tunnels. A 27m x 17m jack-up barge (JUB) called **Aran 250** will be employed to undertake the drilling and sampling operations. Works on the nearshore are expected to start on 29<sup>th</sup> August 2024 for period of 10-14 days, dependent on weather.



Jack-up Barge Aran 250

### **Offshore Intrusive Ground Investigations and Seabed Sampling**

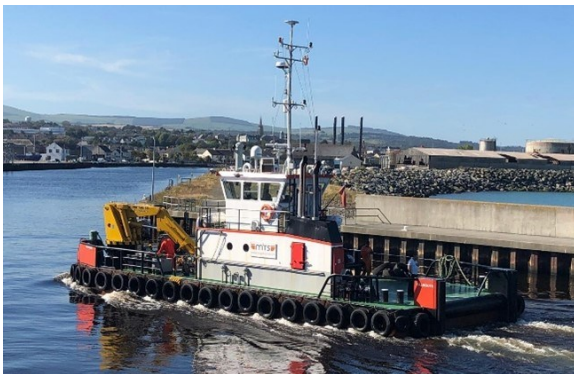
The works comprise Geotechnical Investigations (GI) of the Sizewell **offshore** area to facilitate construction of intake and outfall tunnels, and associated seabed constructions, for the power plant cooling system. A 60m x 32m jack-up barge called **Excalibur** will be employed to undertake the works. Works on the offshore are expected to start on 29<sup>th</sup> August 2024 for period of 16 weeks, dependent on weather.



Jack-up Barge Excalibur

Three tugs will support the arrival and subsequent movement of the JUBs: i) a 32m LOA blue, black and red tug called **TSM Kermor** ii) a 45m LOA blue and black tug called **TSM Alize** and iii) a 21.6m LOA white and black tug called **CT Vector**.

Crew will be transferred onto the JUBs by a 12m white-hulled, crew-transfer vessel called **CRC Vanguard**.



Top left: *TSM Kermor* top right: *TSM Alize*, bottom left: *CT Vector*, bottom right: *CRC Vanguard*

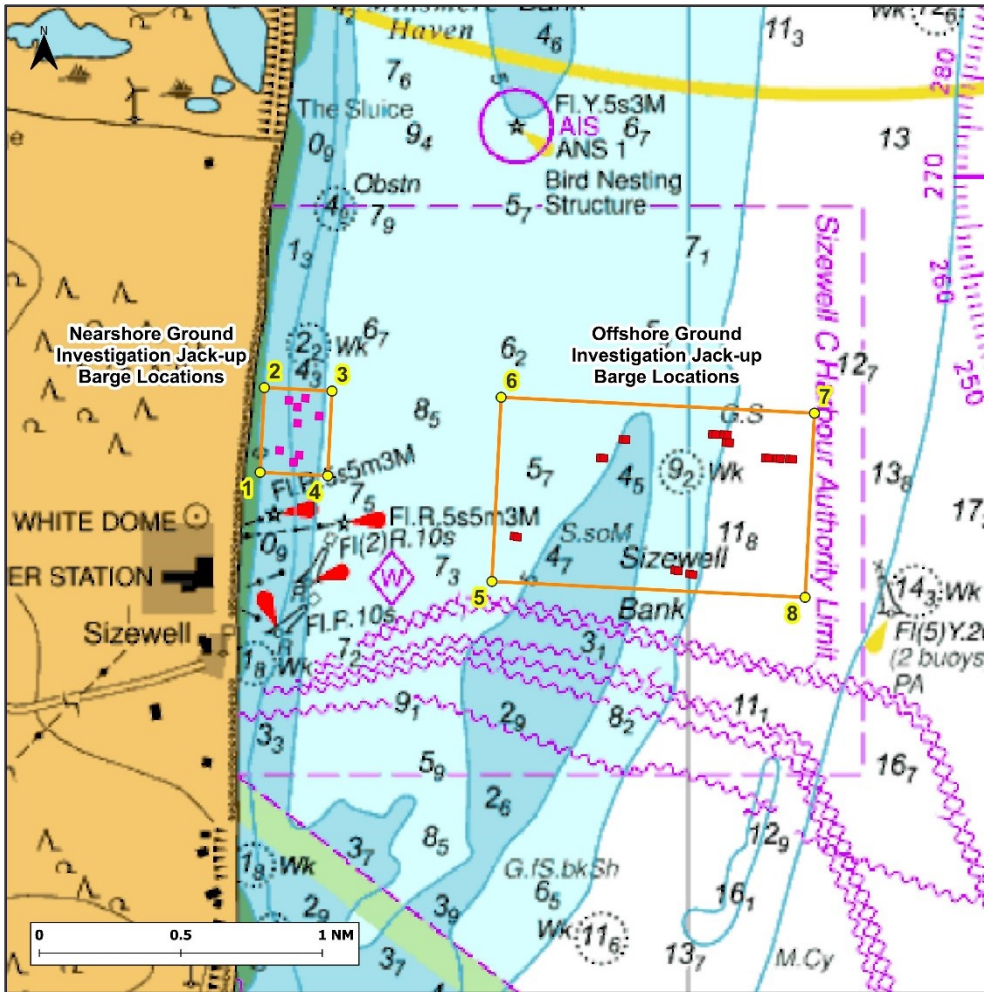
### Instructions to Mariners

All vessels should maintain an appropriate and safe distance when passing the Jack-up Barges (e.g. **500m** from the Arun 250 and **500m** from the Excalibur) and the support vessels, passing at the lowest speed to avoid vessel wash effects.

Project vessels will maintain a continuous listening watch on VHF Channel 16 and will display the appropriate AIS status and day & night signals as prescribed by the International Rules for Prevention of Collisions at Sea.

The chart overleaf shows the planned extent of operations in both the nearshore and offshore areas.

Co-ordinates can be seen in Table 1 overleaf.



**NOTE:** The highlighted boxes are not exclusion zones, but rather a 500m exclusion zone is required around the Jack-up Barge locations. These are shown in pink boxes for the Nearshore survey area and red boxes for the Offshore survey area).

Table 1: Survey Area Coordinates (WGS84)

Name	ID	Latitude (DDM)	Longitude (DDM)
Nearshore Survey Area (Aran 250)	1	52°13.055'	1°37.539'
	2	52°13.353'	1°37.564'
	3	52°13.341'	1°37.952'
	4	52°13.043'	1°37.927'
Offshore Survey Area (Excalibur)	5	52°12.671'	1°38.870'
	6	52°13.319'	1°38.923'
	7	52°13.263'	1°40.721'
	8	52°12.615'	1°40.668'

SZC Harbour Master  
Date: 11/09/2024

Any further enquiries regarding this Notice to Mariners should be directed to:  
[Harbour.Master@sizewellc.com](mailto:Harbour.Master@sizewellc.com)

This notice will be self-cancelling on completion of works.