

# Sizewell C Notice to Mariners No 11 of 2024

## Survey Operations

NOTICE IS HEREBY GIVEN That survey operations are planned to take place on or around Friday 11<sup>th</sup> October 2024.

### Nearshore and Offshore Survey Operations

The survey operations will be carried out from a grey and white, twin hulled 7m catamaran called 'Taran' and will involve the use of a multibeam echo sounder (no equipment will be towed).

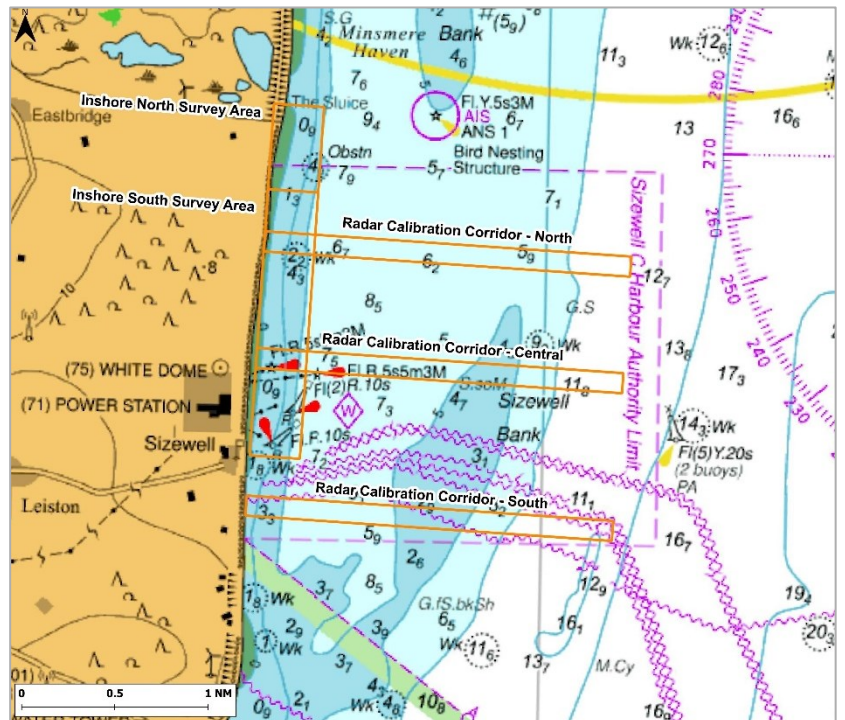
Survey operations are due to commence from 11<sup>th</sup> October for approximately 7 days during daylight hours only.

Other vessels should maintain an appropriate and safe distance when passing the survey vessels whilst they are undertaking survey operations and should pass at the lowest speed to avoid vessel wash effects. The survey vessel will maintain a continuous listening watch on VHF Channel 16.



Taran

This chart shows the planned survey areas. See co-ordinates in Table 1 overleaf.



SZC Harbour Master

Date: 09/10/2024

Any further enquiries regarding this Notice to Mariners should be directed to:

[Harbour.Master@sizewellc.com](mailto:Harbour.Master@sizewellc.com)

This notice will be self-cancelling on completion of works.

Table 1: Survey Area Co-ordinates

Transect	Approximate Area (km <sup>2</sup> )*	AOI Node	Lat	Long
			DDM	DDM
North Calibration Corridor	0.73	NE corner	52° 13.5366'	1° 40.7352'
		SE corner	52° 13.4286'	1° 40.7262'
		SW corner	52° 13.5282'	1° 37.527'
		NW corner	52° 13.6356'	1° 37.5354'
Central Calibration Corridor	0.73	NE corner	52° 12.912'	1° 40.6836'
		SE corner	52° 12.8046'	1° 40.6746'
		SW corner	52° 12.9036'	1° 37.476'
		NW corner	52° 13.011'	1° 37.485'
South Calibration Corridor	0.73	NE corner	52° 12.1206'	1° 40.6182'
		SE corner	52° 12.0132'	1° 40.6092'
		SW corner	52° 12.1122'	1° 37.4118'
		NW corner	52° 12.2202'	1° 37.4202'
Inshore South Survey Area	1.33	NE corner	52° 13.6224'	1° 37.554'
		SE corner	52° 12.0984'	1° 37.9926'
		SW corner	52° 12.1122'	1° 37.9926'
		NW corner	52° 13.6356'	1° 37.554'
Inshore North Survey Area	0.18	NE corner	52° 14.3058'	1° 38.0298'
		SE corner	52° 13.848'	1° 37.9926'
		SW corner	52° 13.8618'	1° 37.554'
		NW corner	52° 14.3196'	1° 37.5912'