

# Sizewell C Notice to Mariners No 9.1 of 2025

## *Bathymetric Survey*

NOTICE IS HEREBY GIVEN: That a bathymetric survey is planned to take place on 5<sup>th</sup> September 2025, weather permitting.

### Nearshore Survey Operations

The survey operations will be carried out from a 9.5m LOA orange RIB called 'Spectrum Nyquist' and will involve the use of a multibeam echo sounder (no equipment will be towed).

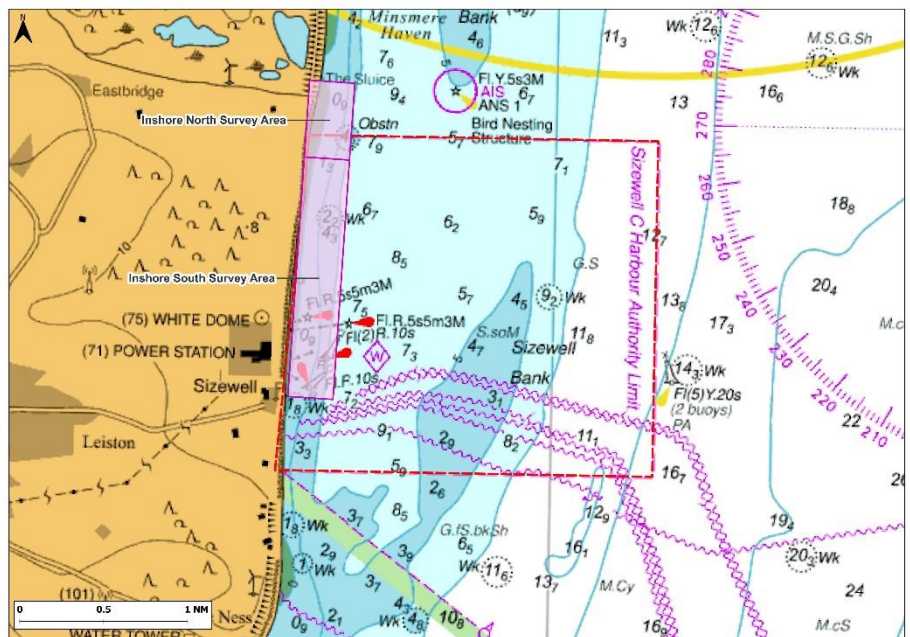
Survey operations are due to commence on 5<sup>th</sup> September and take approximately 2 days to complete.

Other vessels should maintain an appropriate and safe distance when passing the survey vessel whilst they are undertaking survey operations and should pass at the lowest speed to avoid vessel wash effects. All vessels should comply with the Colregs at all times. The survey vessel will maintain a continuous listening watch on VHF Channel 16.



Spectrum Nyquist

This chart shows the planned survey areas. See co-ordinates in Table 1 overleaf.



Neil Glendinning

SZC Harbour Master

Date: 04/09/2025

Any further enquiries regarding this Notice to

Mariners should be directed to: [Harbour.Master@sizewellc.com](mailto:Harbour.Master@sizewellc.com)

This notice will be self-cancelling on completion of works.

Table 1: Co-ordinates of survey

Area	Approximate Area (km <sup>2</sup> )*	AOI Node	WGS84		DD		DDM	
			Lat	Long	Lat	Long	Lat	Long
Wider extent Inshore South Survey Area	1.33	NE corner	52°13'51"N	001°38'00"E	52.23083	1.63333	52°13.85'	1°38'
		SE corner	52°12'25"N	001°38'00"E	52.20694	1.63333	52°12.417'	1°38'
		SW corner	52°12'25"N	001°37'26"E	52.20694	1.62389	52°12.417'	1°37.433'
		NW corner	52°13'51"N	001°37'26"E	52.23083	1.62389	52°13.85'	1°37.433'
Wider extent Inshore North Survey Area	0.18	NE corner	52°14'18"N	001°38'00"E	52.23833	1.63333	52°14.3'	1°38'
		SE corner	52°13'51"N	001°38'00"E	52.23083	1.63333	52°13.85'	1°38'
		SW corner	52°13'51"N	001°37'26"E	52.23083	1.62389	52°13.85'	1°37.433'
		NW corner	52°14'18"N	001°37'26"E	52.23833	1.62389	52°14.3'	1°37.433'

Notice to Mariners in Force

- No.15 of 2024
- No.19 of 2024
- No. 5 of 2025
- No. 9 of 2025
- No. 11 of 2025